

8A Sun Street  
Waltham Abbey  
Essex  
EN9 1EE

T: 01992 652006  
www.kings-group.net



## Pick Hill, EN9 3LD



**Asking Price £550,000 Freehold**

## CHAIN FREE | THREE-BEDROOM SEMI-DETACHED BUNGALOW

This three-bedroom semi-detached bungalow offers spacious and versatile accommodation arranged across a single level, making it suitable for a variety of living requirements. The property comprises three well-proportioned bedrooms, two reception rooms, a kitchen, and bathroom facilities, with a practical layout that provides flexibility for both family living and those seeking additional reception or workspace.

Externally, the property benefits from a private rear garden and off-street parking to the front for up to three vehicles. The outdoor space provides ample room for gardening, entertaining, or general family use.

Situated within the established Pick Hill area of Waltham Abbey, the property is conveniently positioned for access to local amenities, schools, and transport links. Waltham Abbey town centre offers a range of shops, restaurants, and everyday services, while nearby road connections, including the M25, provide access to surrounding areas. Rail services from nearby stations offer direct links into London and beyond.

The property presents an opportunity to acquire a well-positioned bungalow in a popular residential location with flexible accommodation and further potential.

Call Kings Group today to arrange your viewing and avoid disappointment - 01992 652 006!

### HALL

**LIVING ROOM 15'1 x 10'5**

**EXTENSION 12'7 x 5'11**

**KITCHEN 12'10 x 11'9**

**BEDROOM 13'10 x 11'3**

**BEDROOM 13'3 x 10'5**

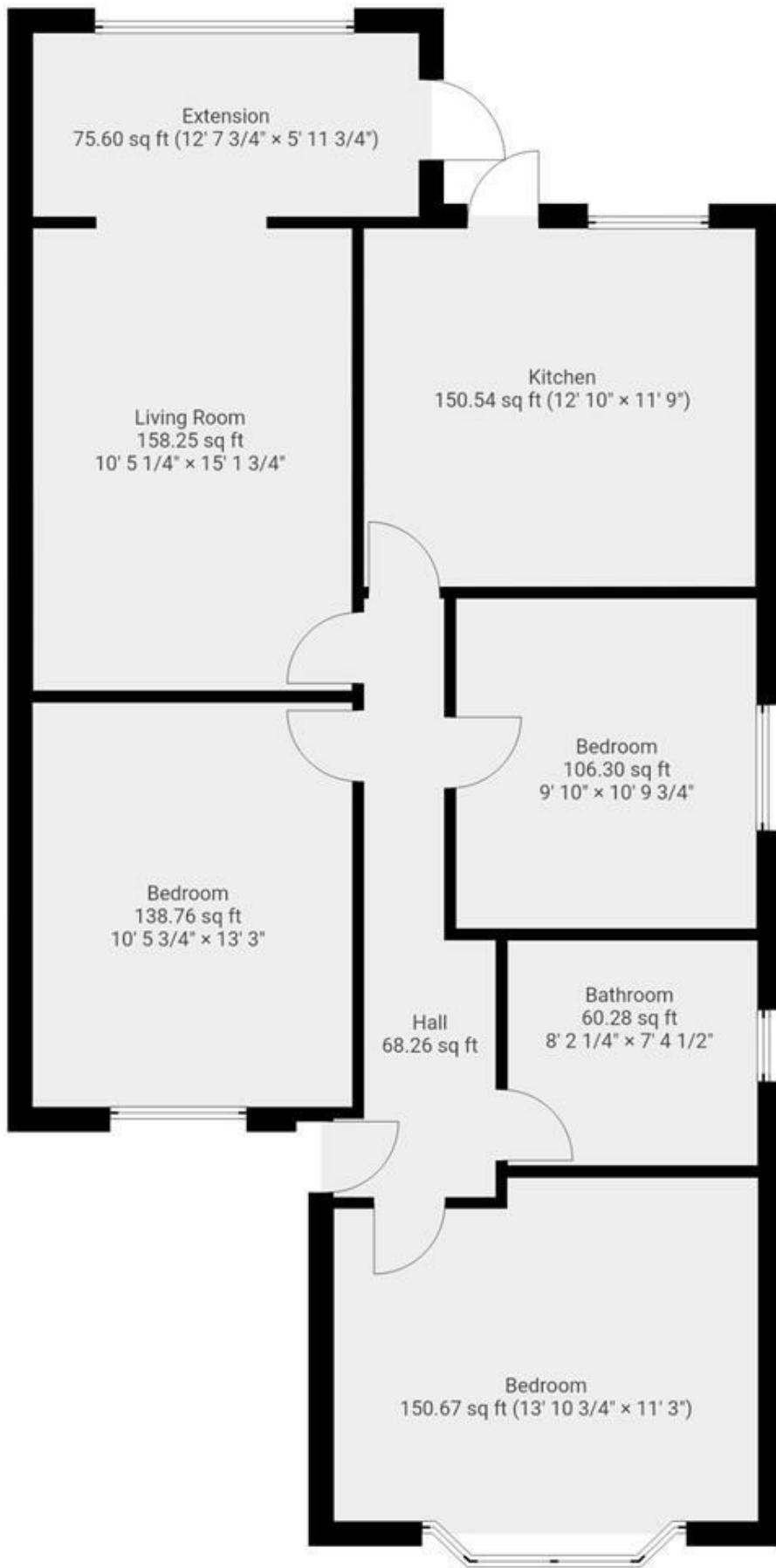
**BEDROOM 10'9 x 9'10**

**BATHROOM 8'2 x 7'4**

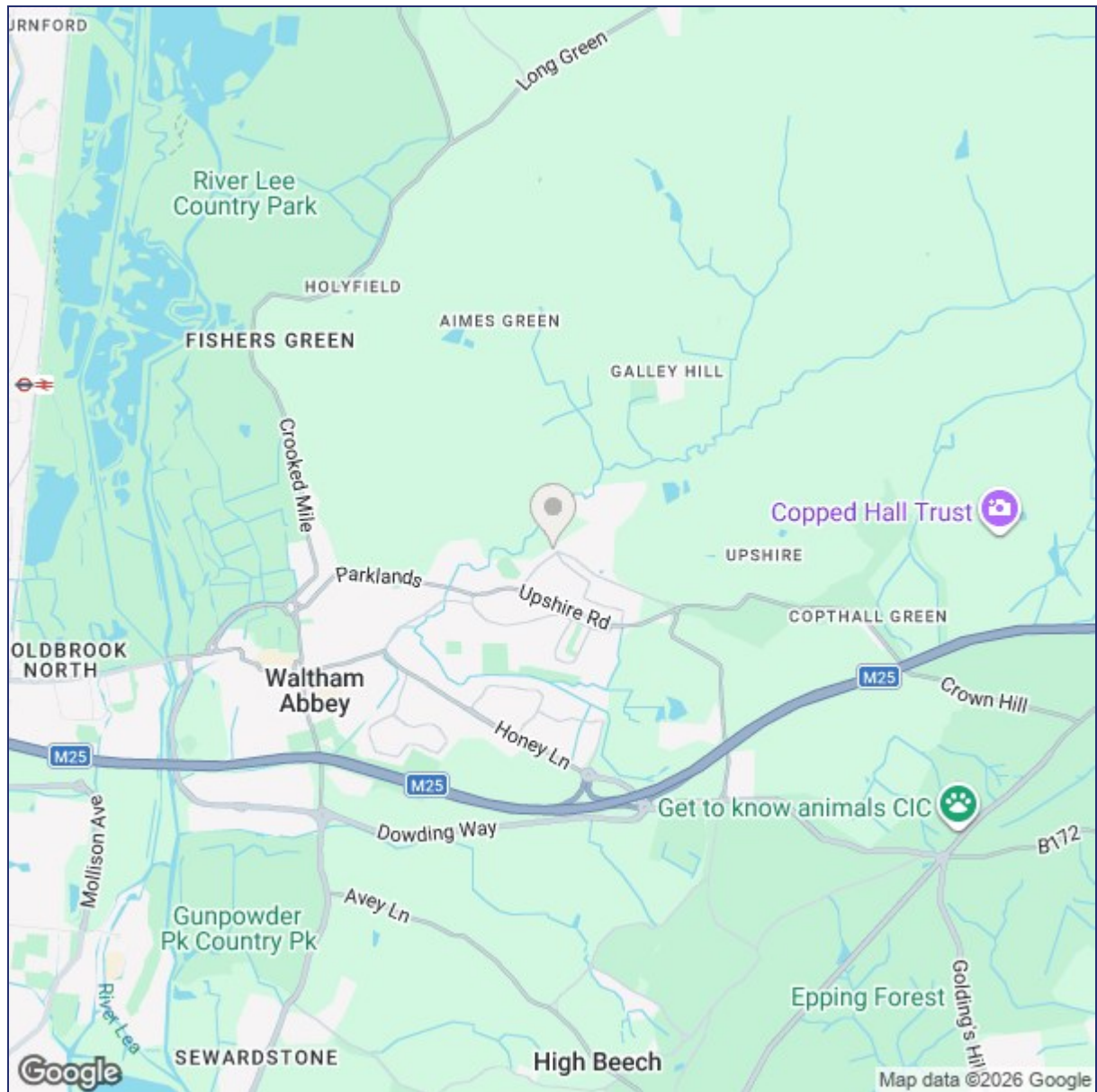
### DISCLAIMER

1. MONEY LAUNDERING REGULATIONS: Intending purchasers will be asked to produce identification documentation at a later stage and we would ask for your co-operation in order that there will be no delay in agreeing the sale.
2. General: While we endeavour to make our sales particulars fair, accurate and reliable, they are only a general guide to the property and, accordingly, if there is any point which is of particular importance to you, please contact the office and we will be pleased to check the position for you
3. The measurements indicated are supplied for guidance only and as such must be considered incorrect.
4. Services: Please note we have not tested the services or any of the equipment or appliances in this property, accordingly we strongly advise prospective buyers to commission their own survey or service reports before finalising their offer to purchase.
5. References to tenure of a property are based upon information supplied by the vendor. The agent has not had sight of the title documents, a buyer is advised to obtain verification from their solicitor.
6. THESE PARTICULARS ARE ISSUED IN GOOD FAITH BUT DO NOT CONSTITUTE REPRESENTATIONS OF FACT OR FORM PART OF ANY OFFER OR CONTRACT. THE MATTERS REFERRED TO IN THESE PARTICULARS SHOULD BE INDEPENDENTLY VERIFIED BY PROSPECTIVE BUYERS OR TENANTS. KINGS GROUP NOR ANY OF ITS EMPLOYEES OR AGENTS HAS ANY AUTHORITY TO MAKE OR GIVE ANY REPRESENTATION OR WARRANTY WHATEVER IN RELATION TO THIS PROPERTY.





THIS FLOORPLAN IS PROVIDED WITHOUT WARRANTY OF ANY KIND. SENSOPIA DISCLAIMS ANY WARRANTY INCLUDING, WITHOUT LIMITATION, SATISFACTORY QUALITY OR ACCURACY OF DIMENSIONS.



Energy Efficiency Rating		Environmental Impact (CO <sub>2</sub> ) Rating	
	Current	Potential	
Very energy efficient - lower running costs			Very environmentally friendly - lower CO <sub>2</sub> emissions
(92 plus) <b>A</b>			(92 plus) <b>A</b>
(81-91) <b>B</b>			(81-91) <b>B</b>
(69-80) <b>C</b>			(69-80) <b>C</b>
(55-68) <b>D</b>			(55-68) <b>D</b>
(39-54) <b>E</b>			(39-54) <b>E</b>
(21-38) <b>F</b>			(21-38) <b>F</b>
(1-20) <b>G</b>			(1-20) <b>G</b>
Not energy efficient - higher running costs			Not environmentally friendly - higher CO <sub>2</sub> emissions
<b>England &amp; Wales</b>	EU Directive 2002/91/EC		<b>England &amp; Wales</b>

("These details are correct at time of going to press").

THE PROPERTY MISDESCRIPTIONS ACT 1991. The agent has not tested any apparatus, equipment, fixtures or services and so cannot verify that they are in working order, or fit for the purpose. References to the Tenure of a property are based on information supplied by the vendor. The agent has not had sight of the Title documents. A buyer is advised to obtain verification from their Solicitor or Surveyor.

